

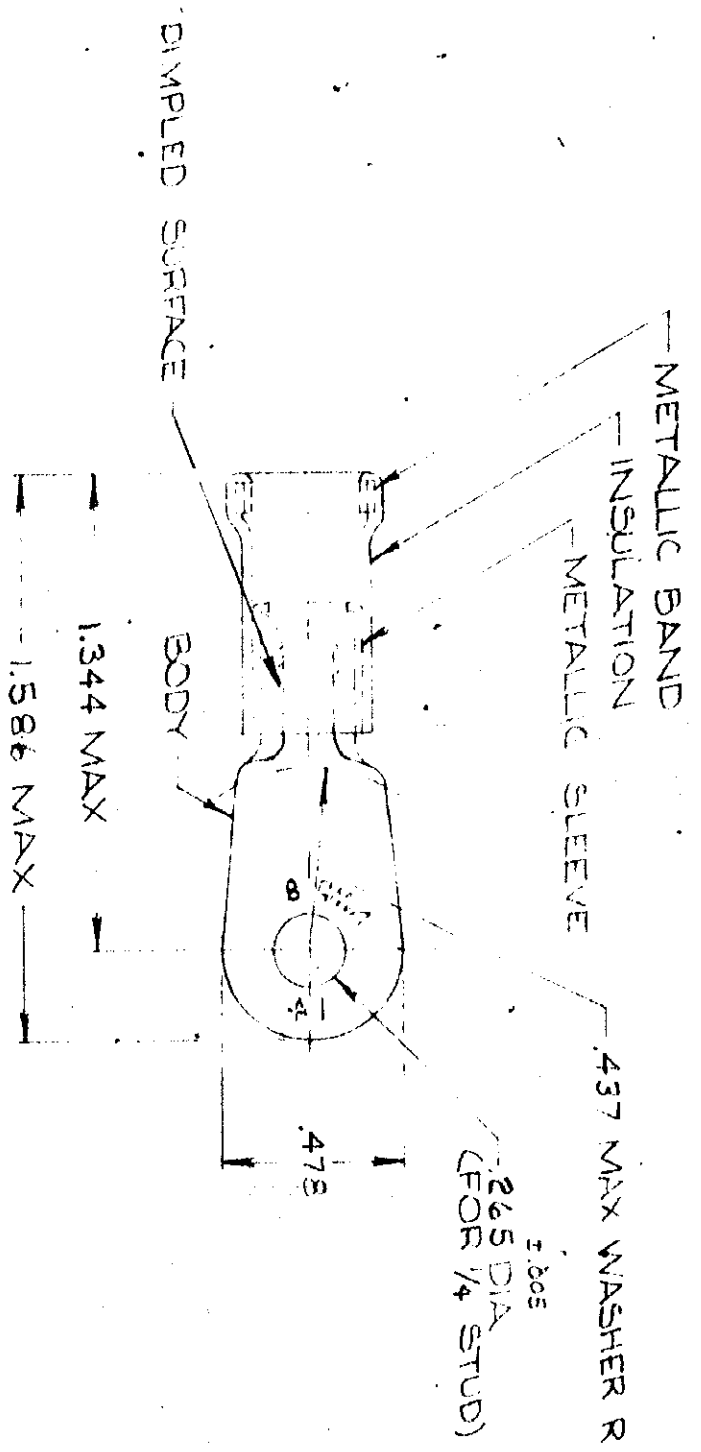
DRAWING MADE IN AMERICAN PROJECTION

© 1989 BY AMP INCORPORATED. ALL RIGHTS RESERVED. AMP PRODUCTS COVERED BY PATENTS AND/OR PATENTS PENDING.

REVISIONS

LTR	DESCRIPTION	DATE	APPROVED
A	REDRAWN & REVISED	PC-5563 1-5-70	<i>[Signature]</i>
B	REV	6-4680 5-5-88	<i>[Signature]</i>

LOC G 1410



TONGUE MATERIAL THICKNESS = .040  
FOR .377 MAX WIRE INS. DIA

QTY	DESCRIPTION	PART NO	CONTRACT NO.	
			DR. <i>F. Hunt</i>	DATE <i>11-14-69</i>
1	WIRE TERMINAL	327268	CHK <i>J.W. 5-7</i>	DATE <i>1-5-70</i>
			APPD <i>J. W. 1-7-70</i>	DATE <i>1-2-70</i>
MATERIAL			RED <i>J.W. Engineering</i>	DATE <i>1-2-70</i>
SEE TABLE			DSGN APPD	OTHER APPD
UNLESS OTHERWISE SPECIFIED DIMENSIONS ARE IN INCHES. TOLERANCES ON: DECIMALS .008 ANGLES .5°			NAME	
AMP HARRISBURG, PENNSYLVANIA			WIRE TERMINAL	
AMP INCORPORATED			AMPLI-BOND-RING TONGUE	
HARRISBURG, PENNSYLVANIA			WIRE SIZE: 8	
BODY: COPPER (QQ-C-576)			SCALE NTS	
INSULATION: PVC COLOR: RED			SIZE	
METALLIC SLEEVE: COPPER (QQ-C-576)			CODE IDENT NO:	
METALLIC BAND: STEEL (ASTM A109)			NUMBER	
MATERIAL & FINISH			327268	
TIN PL (MIL-T-10727)			SHEET 1 OF 1	
INSULATION: PVC COLOR: RED				
METALLIC SLEEVE: COPPER (QQ-C-576)				
METALLIC BAND: STEEL (ASTM A109)				
MATERIAL & FINISH				